

# A minimum essential standard of living for a single adult with vision impairment: An NCBI and VPSJ report

## A Minimum Essential Standard of Living (MESL)



• Person with vision impairment.



• Person with full sight.



• (18%) more per week for a person with vision impairment.

## Three of the largest additional weekly costs

Health

€11.54  
26%

Landline &  
broadband

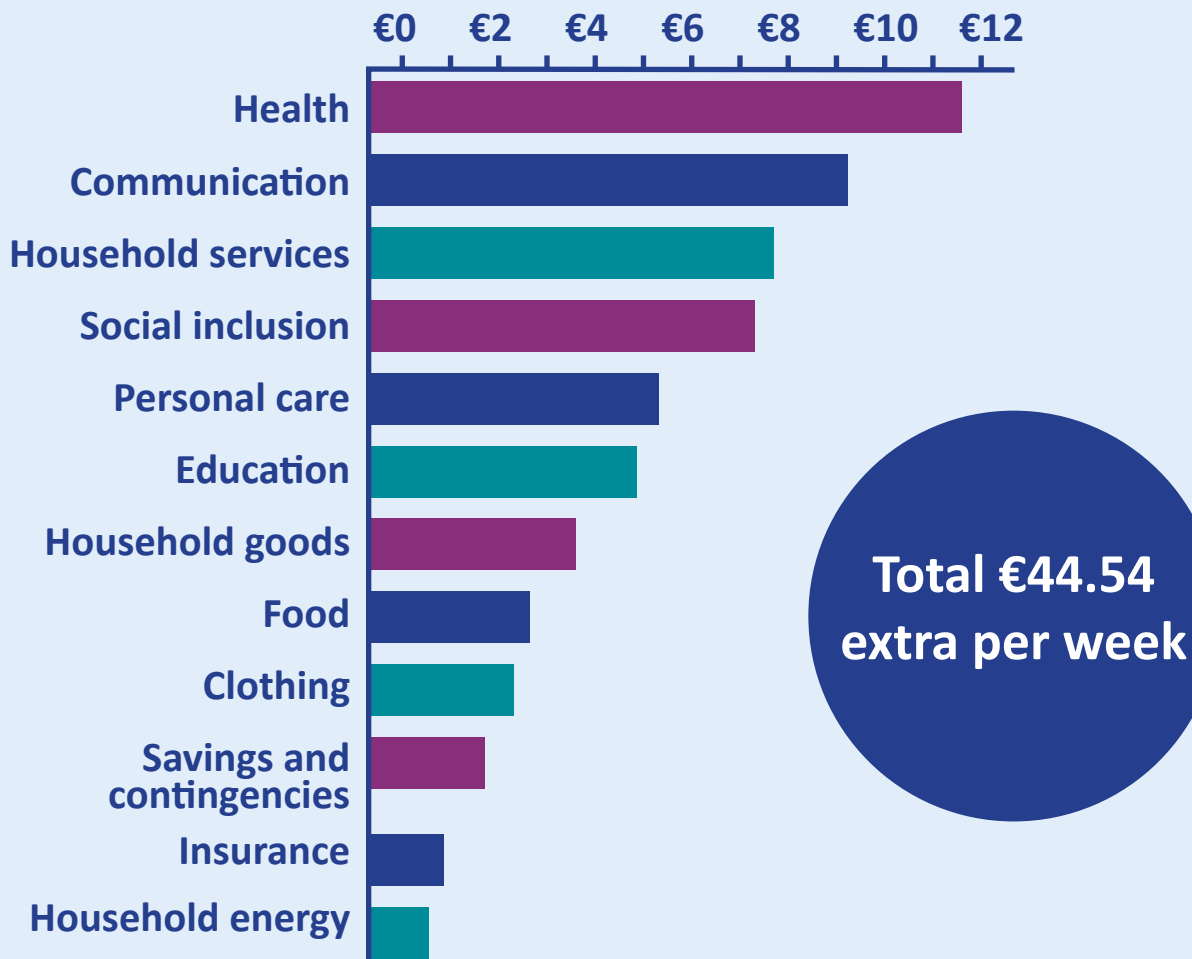
€9.33  
21%

Cleaning & household  
maintenance

€7.69  
17%

# Largest additional weekly costs

Extra per week



[www.ncbi.ie](http://www.ncbi.ie)  
[www.budgeting.ie](http://www.budgeting.ie)  
[www.misc.ie](http://www.misc.ie)

Follow us on

